



1000 GALLON SEPTIC TANK

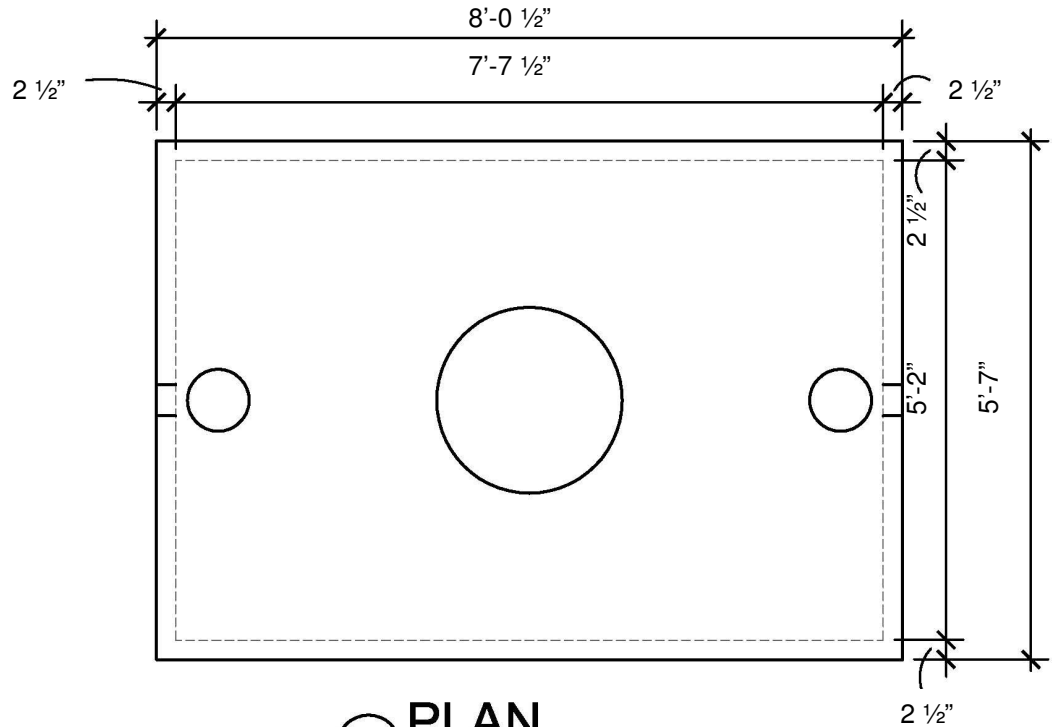
Stock #: 701060

Monolithic Tank
Meets ASTM-C-1227
Spec. for water and
wastewater tanks

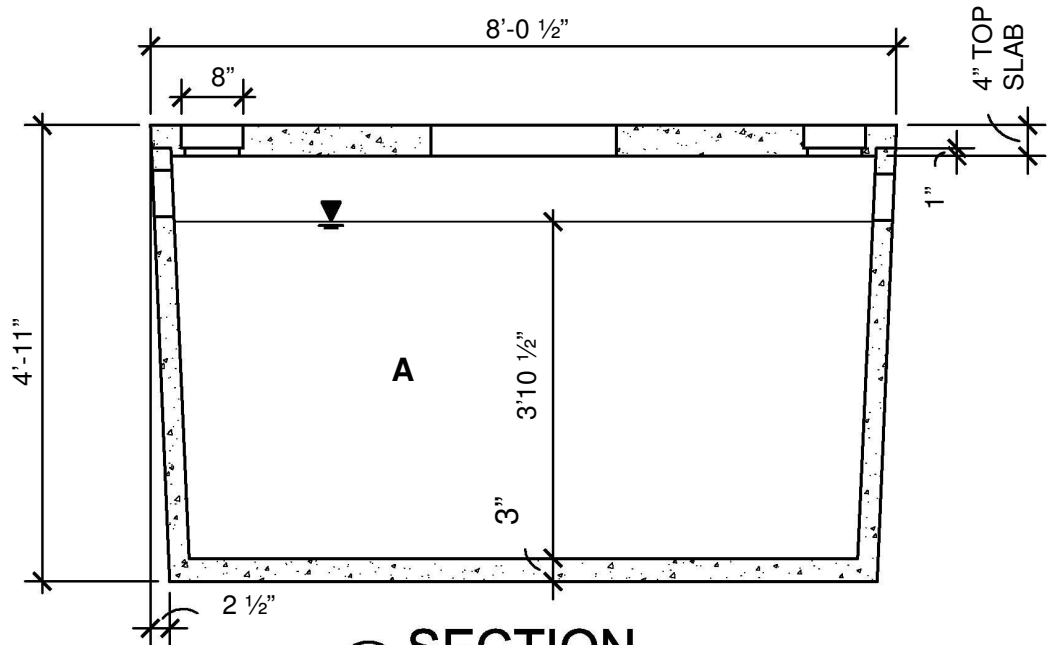
Minimum Concrete
Compressive Strength
5,000 PSI

Butyl rubber sealant
between base and lid

Inlet= 49 1/2"
Outlet= 46 1/2"



2 PLAN
N.T.S.



1 SECTION
1/4" = 1'-0"

YOUR TOTAL WASTEWATER SOLUTION	First Compartment (A)	Gallons / inch Compartment (A)	Approximate weight
www.siprecast.com	1141 gal.	24.5 gal. / inch	8,000 lbs.