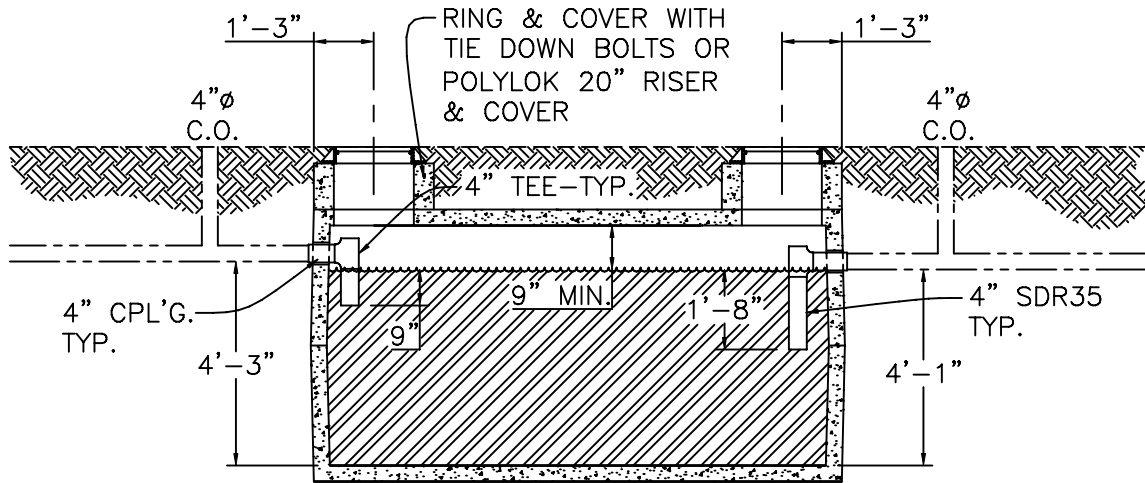




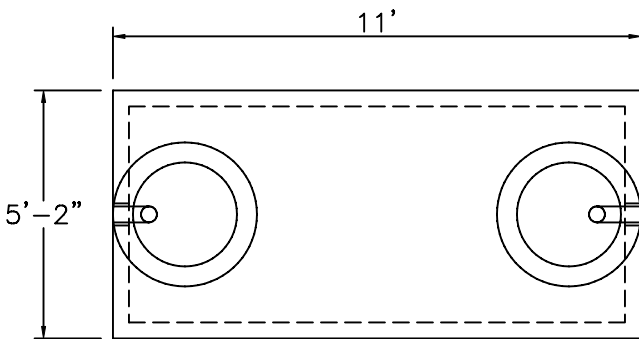
8650 Box Rd.  
 Shreveport, LA 71106  
 Phone: 318-869-2085  
 Fax: 318-869-2098  
 800-456-1970

DESIGN SPECIFICATION ASTM C 1227-05

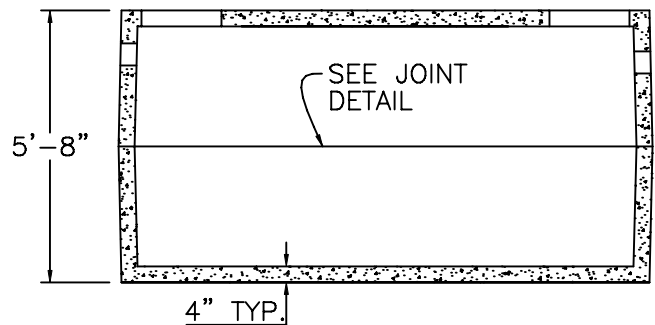
4500 P.S.I. CONC. @ 28 DAYS.  
 REINF. 4X4 4/4 WELDED WIRE FABRIC  
 CONFORM TO ASTM SPECIFICATION A-185  
 AND #4 DEFORMED BARS CONFORM TO  
 ASTM SPECIFICATION A 615



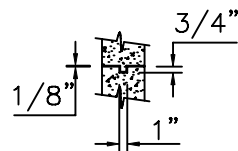
SCHEMATIC



PLAN VIEW



LONG SECTION



JOINT DETAIL

JOINT SEALANT IS RAM-NEK PREFORMED  
 FLEXIBLE PLASTIC GASKET CONFORM TO  
 ASTM SPECIFICATION C 990-91

**1350 Gal. SEPTIC TANK**

DRAWN BY: KWD

APP'D BY: SN

DATE: 8/14/07

SCALE: 1/4"=1'-0"