



1500 GAL. TWO COMPARTMENT SEPTIC TANK

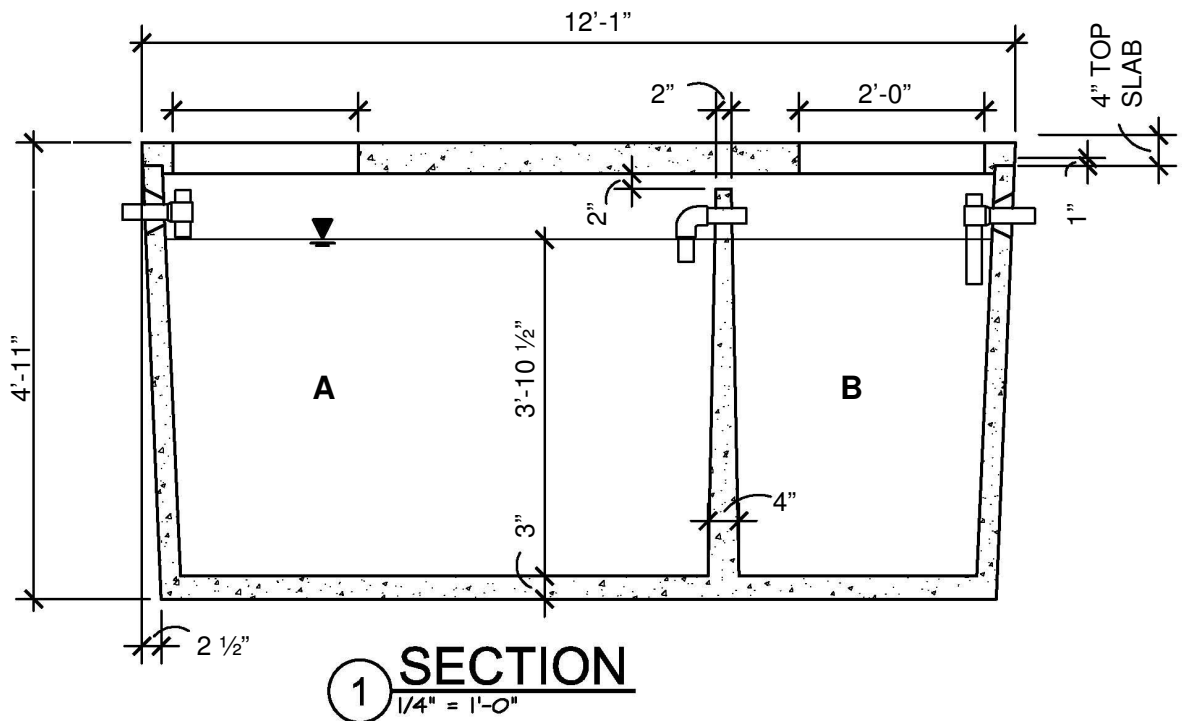
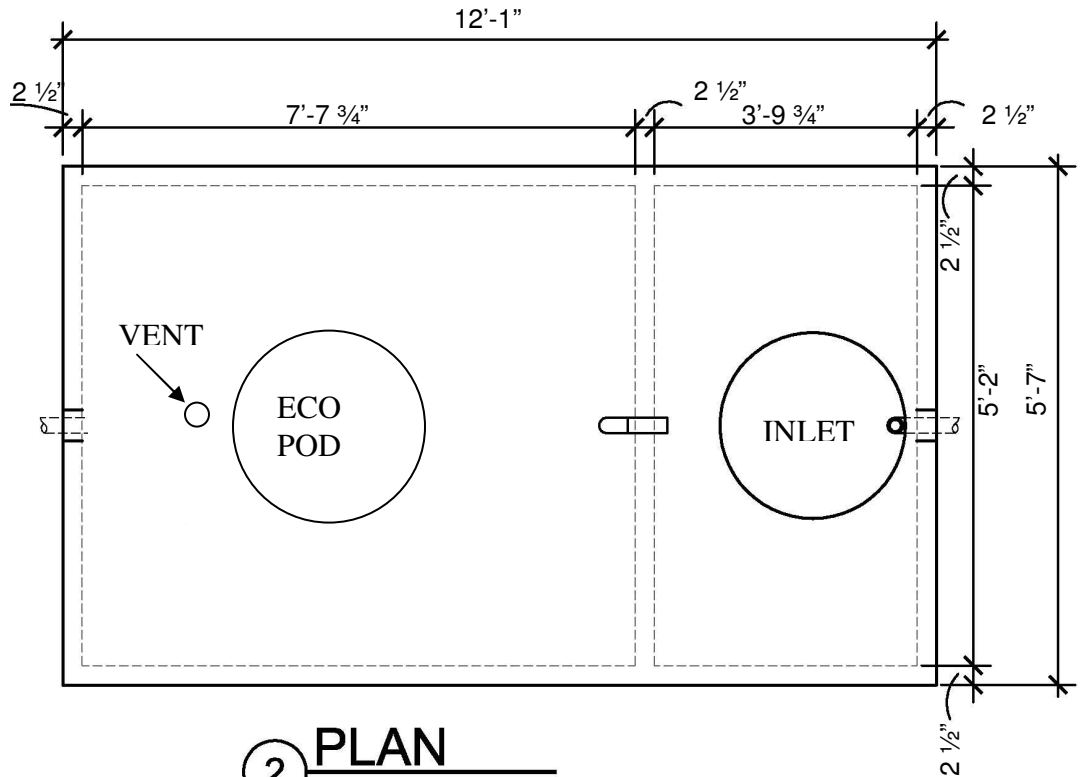
Stock #: 701025

Monolithic Tank Meets ASTM-C-1227 Spec. for water and wastewater tanks

Minimum Concrete Compressive Strength 5,000 PSI

Butyl rubber sealant between base and lid

Inlet= 49 1/2"
Outlet= 46 1/2"



YOUR TOTAL WASTEWATER SOLUTION	First Compartment (A)	Second Compartment (B)	Gallons / inch Compartment(B)	Approximate weight
www.siprecast.com	1219 gal.	571 gal.	12.3 gal. / inch	13,300 lbs.