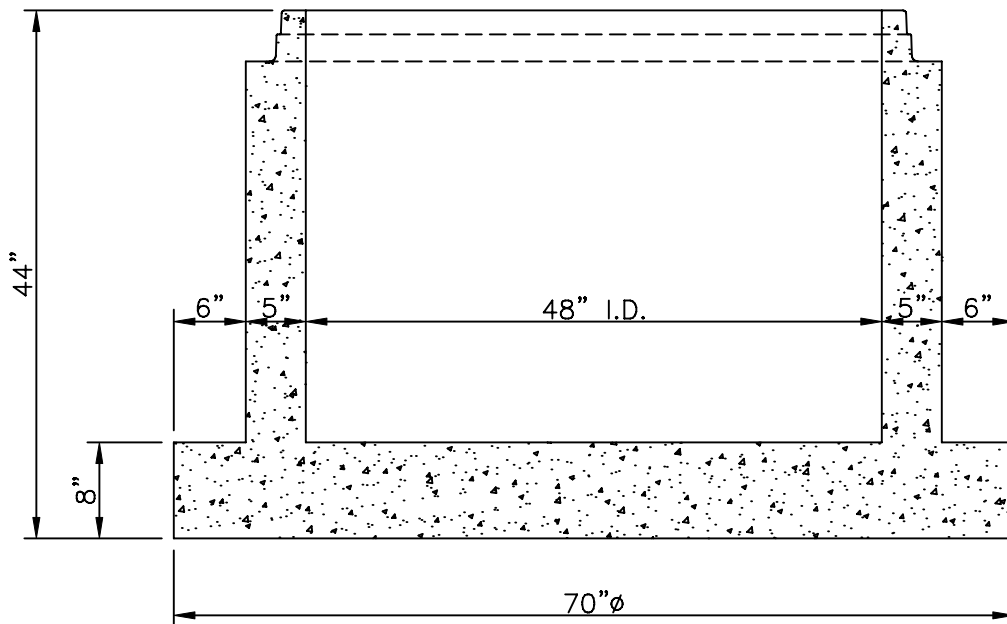
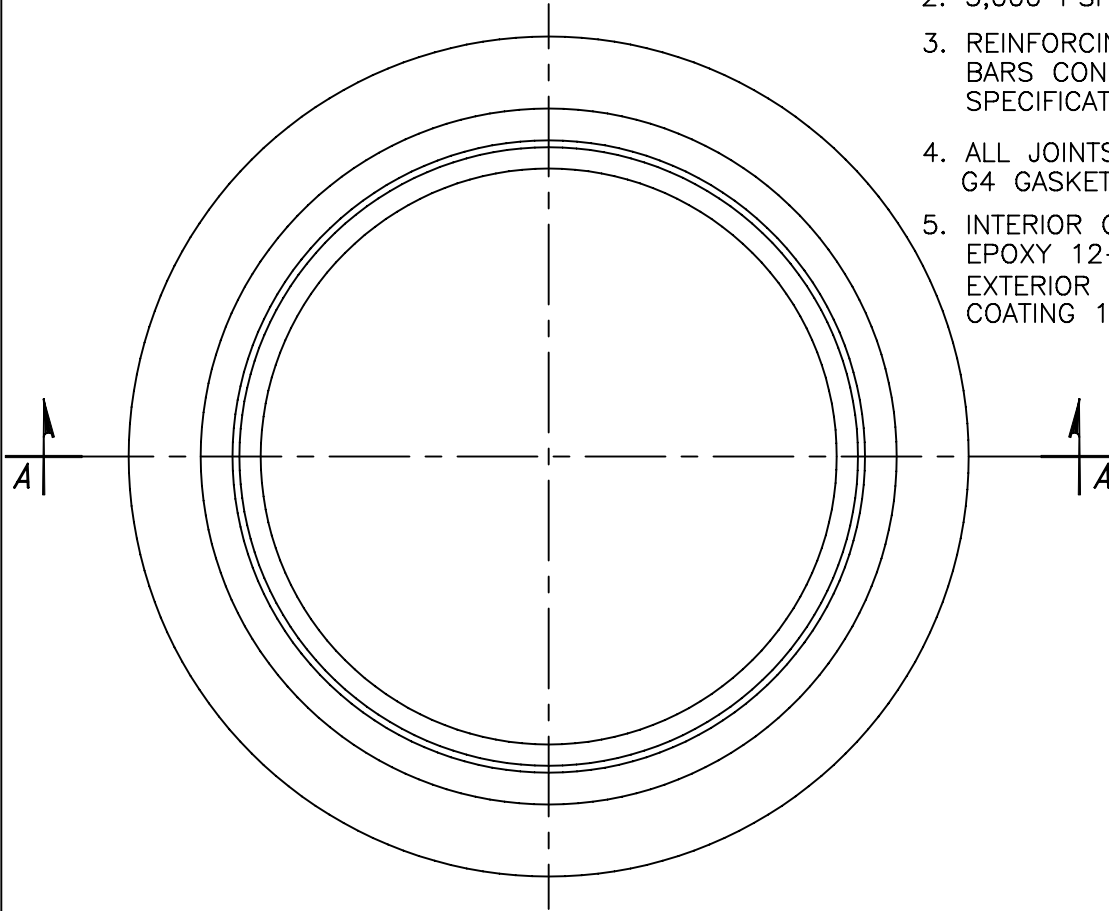




8650 Box Rd.  
Shreveport, LA 71106  
Phone: 318-869-2085  
Fax: 318-869-2098  
800-456-1970

### DESIGN & CONSTRUCTION NOTES

1. PRECAST M.H. IS DESIGNED TO ASTM-C-478-88A
2. 5,000 PSI CONCRETE IN 28 DAYS.
3. REINFORCING STEEL DEFORMED BARS CONFORMING TO ASTM SPECIFICATION A615.
4. ALL JOINTS SEAL WITH PRESS-SEAL G4 GASKETS
5. INTERIOR COATED WITH COAL TAR EPOXY 12-14 MILS.  
EXTERIOR COATED WITH BITUMINOUS COATING 10 MILS.



SECTION "A"- "A"

|  |                   |
|--|-------------------|
| <b>48" <math>\phi</math> BASE M.H.</b> |                   |
| DRAWN BY: KWD                          | APP'D BY: SN      |
| DATE: 1/2/07                           | SCALE: 3/4"=1'-0" |