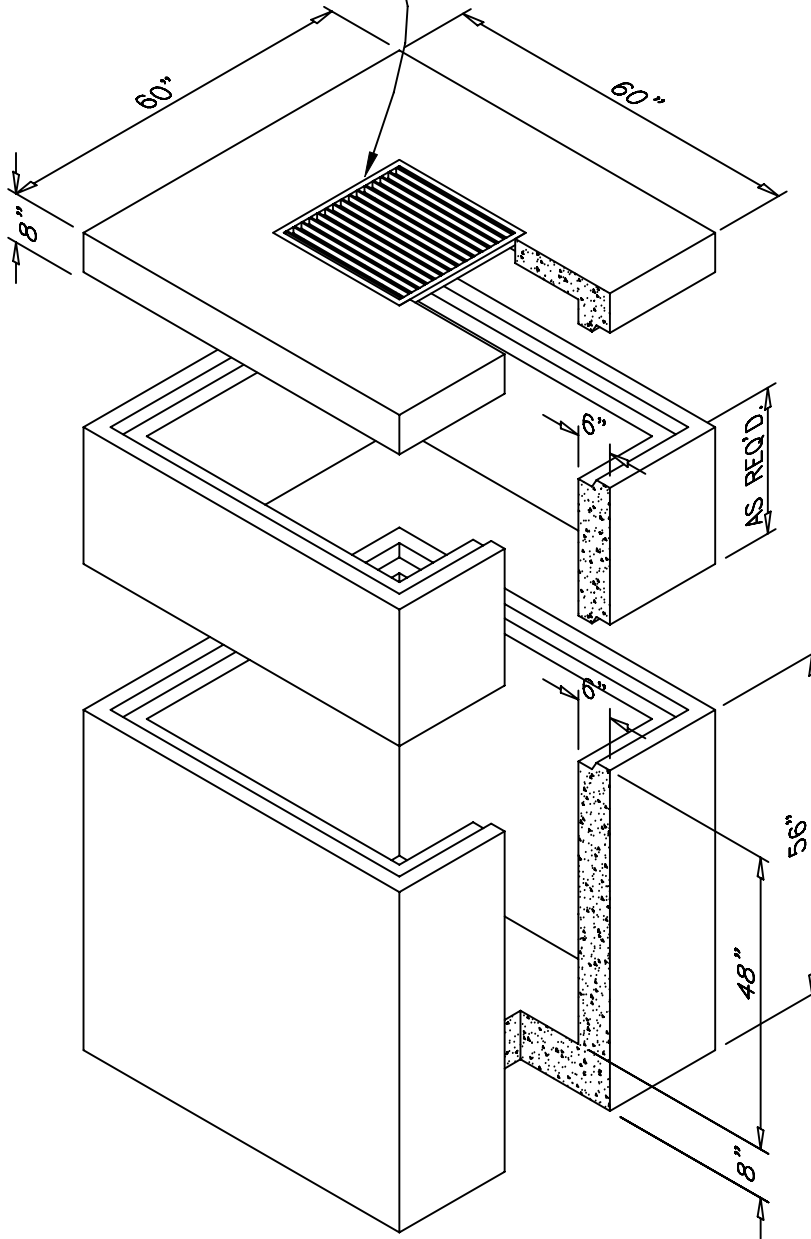


DESIGN & CONSTRUCTION NOTES

1. MEETS SPEC. C913-02
2. 4,500 PSI CONCRETE IN 28 DAYS.
3. REINFORCING STEEL DEFORMED BARS CONFORMING TO ASTM SPECIFICATION A615
4. KEY WAY JOINTS ON TOP & RISER SEAL WITH RAM-NEK SEALANTS.
5. MIN OF 2" COVERAGE & 15" SPLICE WHERE REQUIRED.

CAST IRON AS REQ'D.



48" CATCH BASIN

DRAWN BY: KWD

APP'D BY: SN

DATE: 7/20/07

SCALE: 3/8"=1'-0"